

## PC-M1B Self Tapping Male

INDUSTRY FIT:



### SPECIFICATIONS:

The self-tapping male PC-M1B is a versatile clip that works with all female clips in the Standard Range, and is suitable for various panel mounting applications. With a 5kg pull out load, the PC-M1B is suitable for small and medium weight panels.

#### PC-M1B

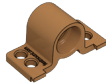


#### USE WITH:

PC-F1A



PC-RF1



PC-SF1



PC-AF1



#### MATERIAL:

White acetal copolymer

#### MORE INFO:

Installation Guide FM IG\_PC-F1A, SF1, RF1  
Clip Layout Guide FM TD-02, 09, 12

### STANDARD PC RANGE

#### BENEFITS

- Self-aligning installation without adhesives
- Perfect panel alignment secure mounting every time
- Remove and refit panels in any sequence 100+ times
- Saves time and reduces cost
- Allows for flexing and expansion of panel and support frame materials
- 5kg pull out load

#### APPLICATIONS

- Covered or painted panels with minimum 8mm thickness
- Ceiling and wall panels
- Exterior deckhead panels
- Refits and upgrades of existing installation
- Variety of substrates

### INSTALLATION: Partially exploded through section showing typical installation method

